



*TECHNICAL STRUCTURES FOR INTERIORS*



**OFF-SITE BATHROOMS   MEDICAL WALLS**  
**TECHNICAL DOORS**



## QUALITY AND PROFESSIONALISM AT THE SERVICE OF MADE IN ITALY



Founded in 1978 for the production of sandwich panels, in 1992 Polistamp diversified its production to include thick panels for the refrigeration sector and aluminum window frames.

Since 2012, the company has also started producing PVC windows and doors. Polistamp is recognized as a competitive and reliable partner both in Italy and in Europe.

The design, drawing, processing, and packaging take place exclusively on Italian territory: the production plants currently occupy an area of over 22,000 square meters and employ a workforce of around 200 specialized resources. Indispensable aspects to guarantee high aesthetic and technological standards, in compliance with the most recent regulations in the energy field to protect Made in Italy.

Starting this year, the company has decided to expand its product range with the creation of the innovative eco-friendly Off-site bathroom cell.

A quality and customizable product for any type of context, from hospital to industrial, residential, school, naval, or commercial.

Choosing Polistamp means choosing innovation, quality, and customization.

## CUSTOMISED INNOVATION

We design our products by combining cutting-edge technology and customized design. We devote ourselves to taking care of every detail with passion, to create unique, tailor-made solutions. Furthermore, our commitment to the circular economy allows us to offer sustainable products without compromising on quality.



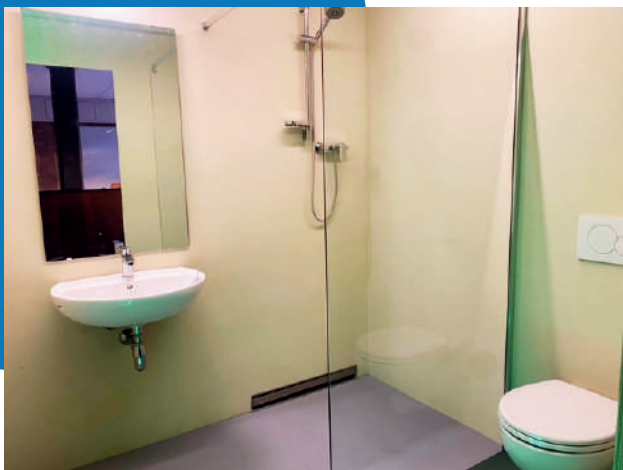
## QUALITY WITHOUT COMPROMISE

We guarantee high standards, durability, reliable delivery times, and defined, competitive costs by having two plants capable of meeting all production commitments.



# OFF-SITE BATHROOMS

Polistamp manufactures bathroom cells that are quick to install and of high quality. Thanks to this, the construction process of facilities for healthcare residences, hospitals, student and social housing is enriched with a useful and innovative product that improves all phases, from design to construction site.



## **BATHROOM POLISTAMP WOOD**

The walls of this variant are made of 15-mm multilayer wood, laminated with a multilayer composite GRP laminate interior. In addition to the aesthetic appearance, this material offers a welcoming and customizable tactile experience through the availability of various color and decor choices.

The floor consists of a 17-mm fiberglass sandwich panel, which guarantees durability and ease of cleaning.

The ceiling, on the other hand, consists of sandwich panels with painted sheet metal both inside and out and a 40 mm thick layer of rock wool (density 35 kg/m<sup>3</sup>). This combination provides excellent thermal and acoustic insulation, creating a comfortable environment.

## **BATHROOM POLISTAMP STEEL**

One of the distinguishing features of this bathroom model is its solid and resistant structure. The walls, made of 15 mm multilayer wood, are coupled with a 225 g/sq.m. painted galvanized steel sheet lining, protected by a 55 mm thick non-toxic PET film. In addition, it is possible to customize both colors and decors according to one's preferences.

The floor consists of a resistant and easy-to-clean 17 mm thick fiberglass sandwich layer, guaranteeing exceptional durability without compromising the aesthetics of the product.

Finally, the ceiling offers remarkable performance thanks to the sandwich panels made of painted sheet metal both internally and externally, with a 40 mm thick layer of high-density rock wool (35 kg/m<sup>3</sup>) in between.

The Polistamp Steel bathroom represents the best in engineering and design. Its solid structure, high-quality materials, and customized finishes make it a unique product.

## **BATHROOM POLISTAMP LUXURY**

One of the main features of this model is the use of 15mm Fermacell gypsum fibre panels for the walls, mechanically coupled with a 3.5mm Kerlite panel (size 100x240). Thanks to this combination, a solid, resistant, and long-lasting surface is achieved.

The floor, like the walls, is also made of 3.5mm Kerlite (dimensions 100x200), coupled with a 12.5mm Fermacell gypsum fibre double panel.

Finally, the ceiling is designed with the utmost attention to detail. For its construction, sandwich panels of internal and external painted sheet metal are used, together with a 40mm thick layer of rock wool (with a density of 35 kg/m<sup>3</sup>).

## **BATHROOM POLISTAMP ASSEMBLY**

This is a bathroom cell composed of modules that can be assembled on site.

The walls are made of sandwich panels of 225 g/sqm galvanised steel sheet and 90 kg/m<sup>3</sup> rock wool, mechanically joined to a Kerlite panel measuring 100x240 and 3.5 mm thick.

The inner face of the panel can be pre-painted and customised with decorations and designs of your choice, with an antimicrobial Pet finish.

## **HIGHT FREQUENCY BATHROOM WALLS**

### **DOOR PANEL**

6/10 press-formed sheet metal leaf pre-painted with an upper layer of 55 mm PET film that is anti-abrasive, anti-corrosive and self-extinguishing.

The sash is 31 mm thick and includes internal polyester foam insulation to improve thermal and acoustic properties.

The extruded aluminium frame is designed to fit over the panels. The hinges and lock are supplied with an L/O knob.



### **PARTITION WALLS**

Made of galvanized sheet metal pre-painted to 25 microns and coated with a PET layer, these sheets are bordered on four sides and filled with self-extinguishing polyurethane of class BS3d0, with a density of approximately 40 kg/m<sup>3</sup>.

They are equipped with hinges, perimeter rebate gaskets, vertical 'U' profiles for wall mounting, horizontal upper 'U' profiles and 150 mm stainless steel feet fixed to the underside.



**VOCE DI CAPITOLATO PARETINE BAGNO POLISTAMP INFISSI SRL**



- **PANNELLO PORTA**

Anta in lamiera pressopiegata 6/10 preverniciata con strato superiore in film di PET 55 mm. antiabrasivo anticorrosivo e autoestinguente.

Spessore anta mm. 31 con isolante interno in poliestere espanso con potere isolante termico ed acustico, avente telaio in alluminio estruso per essere inserito su pannelli.

Cerniere e serratura con pomolo L/O

- **PARETI DIVISORIE SP. 40 MM.**

Realizzate con lamiera zincata 150 preverniciata 25 micron e con uno strato superiore in PET, lamiere ribordate su quattro lati e schiumate con poliuretano autoestinguente classe BS3d0 densità 40+-2 kg/mc. Completi di cerniere, guarnizione perimetrale di battuta, profili verticali ad "U" per il fissaggio a parete, profili orizzontali ad "U" superiori e piedini da 150 mm. In acciaio inox fissati nella parte inferiore.



# BATH WALLS

## DOOR PANEL

6/10 press-formed sheet metal leaf pre-painted with an upper layer of 55 mm PET film that is anti-abrasive, anti-corrosive and self-extinguishing.

The sash is 31 mm thick and includes internal polyester foam insulation to improve thermal and acoustic properties.

The extruded aluminium frame is designed to fit over the panels. The hinges and lock are supplied with an L/O knob.



## PARTITION WALLS THICKNESS 31 MM..

Made of galvanized sheet metal pre-painted to 25 microns and coated with a PET layer, these sheets are bordered on four sides and filled with self-extinguishing polyurethane of class BS3d0, with a density of approximately 40 kg/m3.

They are equipped with hinges, perimeter rebate gaskets, vertical 'U' profiles for wall mounting, horizontal upper 'U' profiles and 150 mm stainless steel feet fixed to the underside.



# BATHROOM FOR INDUSTRIAL HALLS

## DUAL

This is a double bathroom cell designed for use in industrial buildings, consisting of a WC and a shower. The walls are made of 40mm thick galvanized steel sandwich panels, with an inner core of expanded polystyrene of the same thickness.





# DOORS

Polistamp's flagship is our doors, which are manufactured in an infinite range, assortment, and variety, with the possibility to customize them in every detail.

A unique product, elaborate and sophisticated in design, capable of meeting the expectations of the contemporary customer.

Polistamp doors open and close schools, rest homes, hospitals, offices, shops, clinics, sports centers, homes, and hotels.



# MEDICAL WALLS

POLISTAMP medical wall panels consist of modular panels made up of two layers of different materials, with an insulating core in between, which may be high-density polyurethane foam, high-density polyester or mineral wool according to customer requirements.

A product designed specifically for microelectronic environments, pharmaceutical clean rooms, biotechnological and hospital environments, as well as medical and food sterile environments.

The main features are the coplanarity of the surfaces, the use of non-porous antibacterial and fungicide materials, ease of cleaning, impact resistance, and flexibility of assembly and disassembly.





***TECHNICAL STRUCTURES FOR INTERIORS***



**POLISTAMP INFISSI SRL**  
Via Dante Alighieri 47/b  
52015 Pratovecchio-Stia (Ar)  
tel: 0575 5081  
[info@polistamp.com](mailto:info@polistamp.com)

**Off-site bathroom division:**  
**Giovanni Tummino**  
tel: 0575 508255  
cell: 342 3735743  
[giovanni.tummino@polistamp.com](mailto:giovanni.tummino@polistamp.com)